

**ROYAL PRINCE ALFRED
YACHT CLUB**



And the Austrian Airlines Sailing Club

2024 World Airline Sailing Championships
2024 ASCA Sailing Championships

20-23 October 2024

SAILING INSTRUCTIONS

ORGANISING AUTHORITY& HOST CLUB

Royal Prince Alfred Yacht Club in conjunction with Qantas Sailing Club
16 Mitala St, Newport 2106
02 9998 3700
sailing@rpayc.com.au

SECTION ONE – GENERAL SAILING INSTRUCTIONS

1. RULES

1.1 See NOR

2. NOTICE TO COMPETITORS

2.1 Notices to competitors will be posted on the Official Notice Board located at the RPAYC Reception.

3. CHANGES TO SAILING INSTRUCTIONS

3.1 Any change to the SI will be posted before 0900hrs on the day it will take effect, except that any change to the schedule of races will be posted by 1800hrs on the day before it will take effect.

3.2 Changes to a SI may be made on the water. These will be signalled by the display of flag **3rd substitute** with three sound signals from the Race Committee Vessel.

4. SIGNALS MADE ASHORE

4.1 When AP is displayed ashore, '1 minute' is replaced with 'not less than 30 minutes' in Race Signals AP.

5. SCHEDULE OF RACES AND EVENT FORMAT

5.1

Date	Event	Schedule
Sunday 20 th Oct	Welcome Party at Newport Arms Hotel	1800
Monday 21 st Oct	Registration, Briefing, Boat Draw at RPAYC Halyards Bistro	0800
Monday 21 st Oct	Sail Training	0900-1000
Monday 21 st Oct	First Warning Signal (up to 8 races)	1015
Tuesday 22 nd Oct	First Warning Signal (up to 8 races)	1000
Wednesday 23 rd Oct	First Warning Signal (up to 8 races)	1000
Wednesday 23 rd Oct	Captains Meeting at RPAYC	Following Racing
Wednesday 23 rd Oct	Presentation Gala Dinner at RPAYC Edinburgh Room	1830

6. RACING AREA

6.1 The racing area will be in the waters of 'Pittwater', in the vicinity of Scotland Island.

7. BOATS AND SAILS

7.1 A 'boat draw' will be conducted at the Briefing.

7.2 Boats will be identified by bow numbers.

7.3 The sail combination to be used will be signalled from the Race Committee Vessel with or before the warning or attention signal. The signals will have the following meanings:

SIGNAL	SAIL COMBINATION TO BE USED
No signal displayed	Mainsail, Jib & Spinnaker
Code Flag 'R'	Mainsail, & Jib

8. BREAKDOWN AND TIME FOR REPAIRS

8.1 Before the warning signal of a race, within two (2) minutes of finishing or within five (5) minutes of changing into a new boat, whichever is later, a boat may display a **green** flag to signal breakdown or damage to the boat, her sails or injury to her crew, and request a delay to the next start. She shall

proceed as soon as possible to a position just to leeward of the Race Committee Vessel and remain there, unless otherwise directed.

- 8.2 The time allowed for repairs will be at the discretion of the RC.
- 8.3 After the warning signal of a race: a race will not be postponed or abandoned due to breakdown, unless the breakdown signal was displayed as required by SI 8.1.
- 8.4 Except when RRS 62.1(b) applies, failure to effect repairs in the time allowed, or breakdowns after the warning signal shall not be grounds for redress. This changes RRS 62.

9. PENALTY SYSTEM

- 9.1 The penalty for breaking a rule of Part 2 shall be a One Turn Penalty. This changes RRS 44.1 and 44.2.
- 9.2 RRS Appendix T "Arbitration" will apply.

10. CLASS FLAG

- 10.1 The Class Flag will be Code Flag 'E'.

11. MARKS, STARTING/FINISHING LINE

- 11.1 Mark 1 and the Gate marks shall be **yellow** inflatable buoys.
- 11.2 Mark 1a (the offset mark), if laid, shall be a **green** inflatable buoy.
- 11.3 The "Change Mark" shall be a **pink** inflatable buoy. When, in a subsequent change a new mark is replaced, it shall be replaced by an original **yellow** buoy.
- 11.4 The starting and finishing lines shall be between a staff displaying an **orange** flag at the start and the finish, on the Race Committee Signal Boat and a **black and white checkered** inflatable buoy.
- 11.5 The finishing vessel may be different to the starting vessel.

12. THE START

- 12.1 10.1 Races will be started using RRS 26.
- 12.2 10.2 The Starting Line will be between a staff displaying an orange flag on the CV and the course side of the Start Mark.
- 12.3 10.3 A boat starting later than 5 minutes after the starting signal will be scored DNS. This changes RRS A5.1 and A5.2.

13. THE FINISH

- 13.1 The finishing line will be between a staff displaying a orange flag on the CV and the course side of the finishing mark.

14. COURSES

- 14.1 The course and compass bearing to Mark 1 shall be displayed by the Race Committee Boat.
- 14.2 Marks 1 and 1a shall be rounded to port. Mark 1a is an offset mark.
- 14.3 If one Gate mark is missing, boats shall round the existing mark to port.
- 14.4 See SI 18 for courses, course diagram and chart of the Race Area.

15. TIME LIMIT

- 15.1 A boat that does not finish within ten (10) minutes after the first boat has Sailed the Course, will be scored Did Not Finish (DNF). This changes RRS 35.

16. SCORING

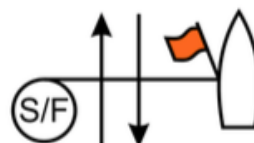
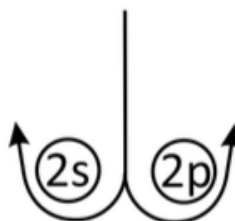
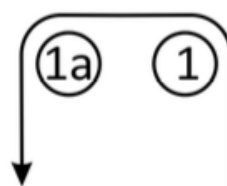
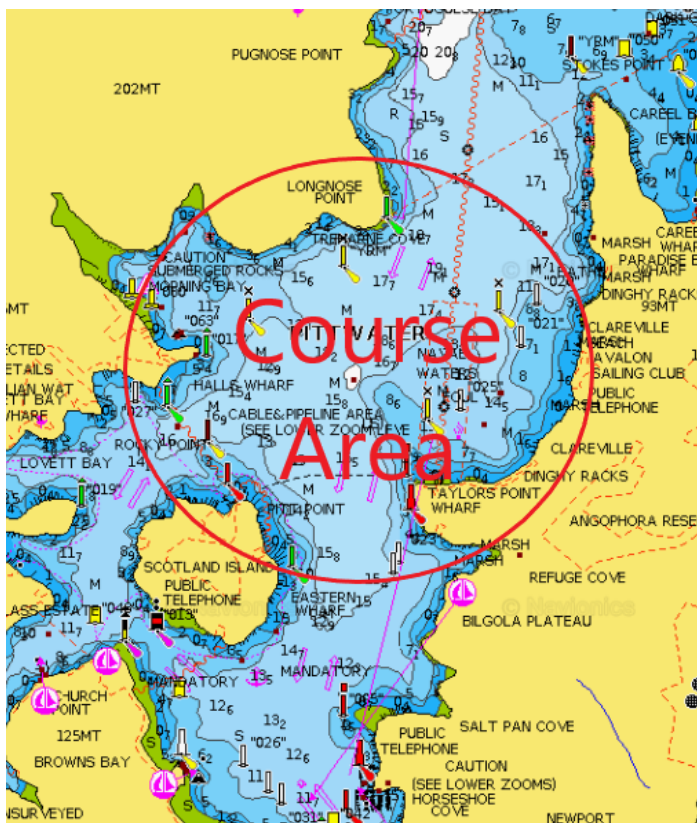
- 16.1 The Regatta will consist of a maximum of eighteen (18) races. The minimum races to constitute a series will be one (1).
- 16.2 Appendix A of the RRS will apply with the exception that SI 16.3 will apply if all teams do not get the chance to commence the same number of races.
- 16.3 If all teams do not get the chance to commence the same number of races, each team will drop their worst score, then their remaining scores will be averaged to a mean figure. Teams will be ranked by their mean score.

17. HEARING REQUESTS

- 17.1 Boats intending to lodge a Protest shall where possible sail past the Committee Vessel and hail such intent. The hail must be acknowledged. This is in addition to the requirements of RRS 61.
- 17.2 Protest forms are available at the Regatta Office. Protests shall be delivered there within 90 minutes of the last boat to finish the last race of the day, or the race committee signals no more racing today, whichever is later. This time will be posted on the Official Notice Board (ONB).
- 17.3 Notices shall be posted within 30 minutes of the protest time limit to inform competitors of hearings in which they are parties or named as witnesses. Hearings will be held at RPAYC. All Protest Information including protest time limit and hearing details may be found on the ONB.

18. COURSES, COURSE DIAGRAM & COURSE AREA

Code	Courses
C1	Course 1: Start - 1 - 1a - Finish
C2	Course 2: Start - 1 - 1a - 2s/2p - 1 - 1a - Finish
C3	Course 3: Start - 1 - 1a - 2s/2p - 1 - 1a - 2s/2p - 1 - 1a - Finish



SI ADDENDUM B – HANDLING of BOATS

From World Sailing's Supplied Equipment: Handling of Boats– updated 2023.

1 GENERAL

[NP] Other restrictions or instructions may be given to the boats verbally by the RC. Flag 3rd substitute is not required.

2 [NP] PROHIBITED ACTIONS

Except in an emergency or to prevent damage or injury, or when directed by an umpire otherwise, the following are prohibited:

- 2.1 Any additions, omissions or alterations to the equipment supplied.
- 2.2 The use of any supplied equipment for a purpose other than that intended or specifically permitted.
- 2.3 The replacement of any equipment without the sanction of the RC.
- 2.4 Modifying or sailing the boat in a manner that it is reasonable to predict that damage, or significant further damage, would result.
- 2.5 Moving equipment from its normal stowage position except when being used.
- 2.6 Boarding a boat without prior permission.
- 2.7 Taking a boat from its berth or mooring without having paid the required damage deposit or having permission from the RC, or, on race days, while 'AP' is displayed ashore.
- 2.8 Hauling out a boat or cleaning surfaces below the waterline.
- 2.9 Marking directly on the hull or deck with permanent ink, using duct tape or using any tape that leaves a residue.
- 2.10 Using a flattener as a reef or using a reef line as an outhaul.
- 2.11 Cross winching foresail sheets.
- 2.12 Omitting any headsail car or turning block before sheeting onto a winch.
- 2.13 Adjusting or altering the tension of standing rigging, excluding the backstay.
- 2.14 Using a winch to adjust the mainsheet, backstay or vang.
- 2.15 Using the spinnaker pole to wing out the foresail.
- 2.16 Attaching lines to the fabric of spinnakers.
- 2.17 Perforating sails, even to attach tell tales.
- 2.18 Radio transmission (including mobile telephones), except to report damage or in response to a request from the RC, or in an emergency.
- 2.19 The use of electronic equipment, other than a watch or a hand held compass.
- 2.20 The use of the shrouds (including any inner shrouds) above the lower bottle screw (turnbuckle) to facilitate tacking or gybing, or to aid the projection of a crew member outboard is prohibited.
- 2.21 Having the bowsprit extended, except when in the process of setting, flying or taking down the spinnaker. The bowsprit shall be fully retracted at the first reasonable opportunity after taking down the spinnaker. A boat that does not retract the bowsprit fully may be warned and given an opportunity to correct the error.
- 2.22 Extending the bowsprit before getting on the new leg of the course, after entering the zone of a rounding mark without a spinnaker set.

3 PERMITTED ITEMS – only the following are permitted:

- 3.1 Taking on board the following equipment:
 - (a) basic hand tools
 - (b) adhesive tape
 - (c) line (elastic or otherwise of 4 mm diameter or less)
 - (d) marking pens
 - (e) telltale material
 - (f) handheld compasses, watches, timers and small personal video devices such as GoPro
 - (g) shackles and clevis pins

-
- (h) spare flags
 - (i) Items to make a spinnaker sheet catcher at the bow.
 - (j) Clothing and personal items suitable for the conditions and time on the boat.
 - (k) Food and drink suitable for the conditions and time on the boat.
 - (l) Items with the approval of the OA, Race Committee or Umpires.
- 3.2 Using the items in 3.1 to:
- (a) prevent fouling of lines, sails and sheets
 - (b) attach tell tales
 - (c) prevent sails being damaged or falling overboard
 - (d) mark control lines
 - (e) make minor repairs and permitted adjustments
 - (f) make signals as per Appendix C6
- 3.3 Changing the number of mainsheet purchases.

4 MANDATORY ACTIONS – the following are required:

- 4.1 [NP] The completion of a written damage report before leaving a boat and submitting it to the RC, even if no damage or loss is recorded. Reports shall include any evidence of matters which could cause damage or disadvantage to the boat in future races. When boat swaps are carried out on the water, the report should be made verbally to the RC as soon as possible.
- 4.2 At the end of each sailing day:
- (a) folding, bagging and placement of the sails as directed
 - (b) leaving the boat in the same state of cleanliness as when first boarded that day
- 4.3 At the end of the final day for a particular boat, cleaning the boat (cabin and decks), removing all trash and removing all tape and marks.
- 4.4 Any request to alter, in any way, the equipment on a boat shall be in writing and worded to permit a yes/no answer.
- 4.5 Complying with any regulations, including speed restrictions and navigation marks, while leaving or returning to the berth or mooring.
- 4.6 A breach of items 4.2 and 4.3 will be considered as damage and the cost of rectification will be deducted from the damage deposit.

SI ADDENDUM C – EQUIPMENT LIST

The following non-fixed items, provided by the OA, are to be always carried on board in their designated place while sailing. Any loss shall be reported on the daily damage report.

SAILS and SAILING EQUIPMENT

- Mainsail and set of battens
- Headsail
- Spinnaker (Symmetrical for 2024)
- Spinnaker sheets
- Headsail sheets
- Tiller extension
- Two Jib cars
- Green damage Flag
- Yellow Flag
- Blue Flag
- Red protest Flag
- Y Flag
- Towing Line

SAFETY GEAR

- 5 x PFD 1's
- 2 x Bucket with lanyard
- 2 x Paddles
- 1 x Knife
- 1 x First aid kit
- 1 x Sound device
- 1 x Torch
- 1 x Storage Container
- 1 x Bilge Pump System

GROUND TACKLE

- 1 x Anchor and warp